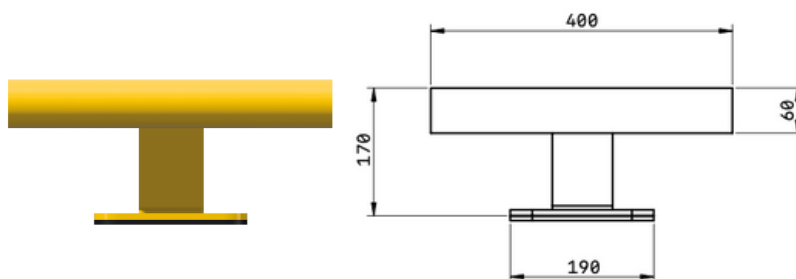


## R-LINE DUAL CONNECTOR



### TECHNICAL SPECS

- Steel tube S195T 60x3mm;
- 180x100mm fixing base made of DC01 steel and vulcanised neoprene;
- Two-layer epoxy paint treatment:
  - Yellow - RAL 1003;

### GROUND ANCHORING

- Anchoring base:
  - 8mm steel;
  - 6mm vulcanised neoprene for impact cushioning;
- 4 installation holes M8/ M12.

REFERENCE	DESCRIPTION
RL150	150mm R-LINE Dual Connector
RLT	End Caps

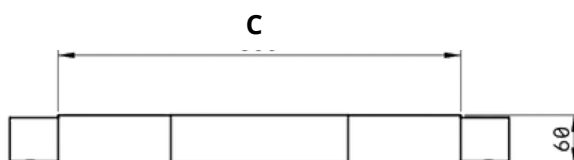


# X-PRO XP.1 TECHNICAL SHEET



R-PROTECTION

## R-LINE CONNECTORS



C - LENGHT

### TECHNICAL SPECS

- Steel tube S195T 60x3mm;
- 2 galvanised steel couplings 54x1.5mm;
- R-LOCK system: modular click system;
- Two-layer epoxy paint treatment:
  - Yellow - RAL 1003;
  - Black - RAL 9005.

REFERENCE	DESCRIPTION
A90	90° Curved Connector
L1100	1100mm Connector
L1000	1000mm Connector
L900	900mm Connector
L800	800mm Connector
L700	700mm Connector

REFERENCE	DESCRIPTION
L600	600mm Connector
L500	500mm Connector
L400	400mm Connector
L300	300mm Connector
L200	200mm Connector



+351 926 031 016  
GERAL@R-PROTECTION.COM

WWW.R-PROTECTION.COM  
RUA DA PAZ 90-94, PAVILHÃO 15  
3800-587 CACIA, AVEIRO - PORTUGAL

